

# Digital Frequency Intelligent Infrared Fence Installation Guide

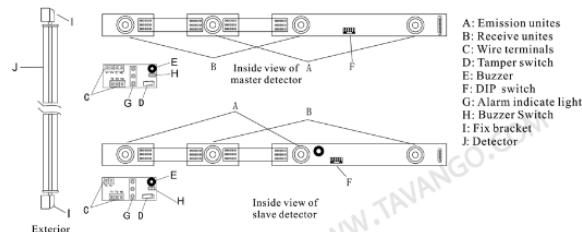
## 1. Brief introduction

The digital alter-frequency intelligence infrared fence is the best infrared fence with highest quality and fullest functions. Adopt CPU micro-process digital control technology, with Al-alloy housing, with advanced technology, distinguished ability, designed perfectly, use coaxial un-spherical lens with double focus, advanced emitter fit for gain auto-adjust technology, with high sensitivity, strong ability of anti-interfere. Completely fit for indoor or outdoor of 24-hour, Perfect Al-alloy housing, tamper, anti-opening circuit design; 360° discretionary rotate can let adjust more quick and accuracy; Adopt photoelectric recognize principle can prevent small pet, bird, tree, leave, specially sunlight result to false alarm effectively. With pre-alarm and trouble output functions, 4,6,8,12 beams eligibility. Silvery housing, streamline design, simply and glory, measure to the requirement of veranda of mo-dern house, fence of villa, open warehouse, pasture, etc.

## 2. Characteristic

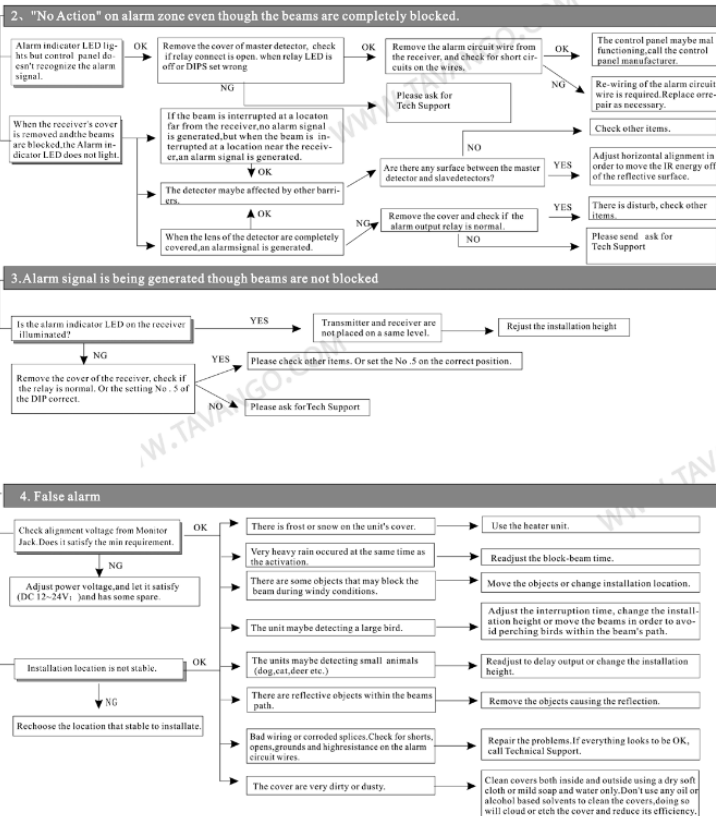
1. Only need emission each other detection, avoid the disturb from sunlight.
2. Block any of beams it will prealarm
3. Alarm output: N.O./N.C. optional
4. AGC ensure not effected by environment
5. Special anti-reflect technology ensure working normally

## 3. Part name



## 4. General guidelines

1. Don't install on a shaking base
2. Don't install on a unstable pole
3. Keep no impediment between the detectors
4. The distance between the ground and the lowest beams shall be 10-30cm, please adjust according to the fact.
5. Build in vertical
6. Wire of the detector shall most be placed into a slot.



## 9. Special comments

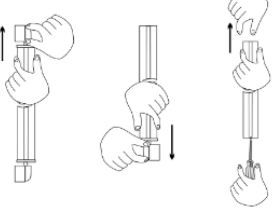
Even the most sophisticated detectors can sometimes be defeated or may fail to warn due to DC power failure/improper connection, malicious masking of the lens, tampering with the optical system, decreased sensitivity in ambient temperatures near that of the human body and unexpected failure of a component part. The above list includes the most common reasons for failure recommended that the detector and the entire alarm system be checked weekly, to ensure proper performance. An alarm system should not be regarded as a substitute for insurance. Home and property owners or renters should be prudent enough to continue insuring their live sand property, even though they are protected by an alarm system.

**WARNING!** Changes or modifications to this unit not expressly approved by the party responsible for compliance could void the user authority to operate the equipment.



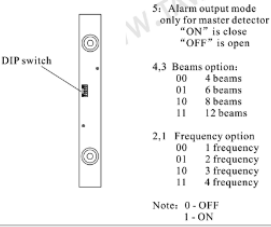
## 5. Installation and setting

### 1. Take out the PCB

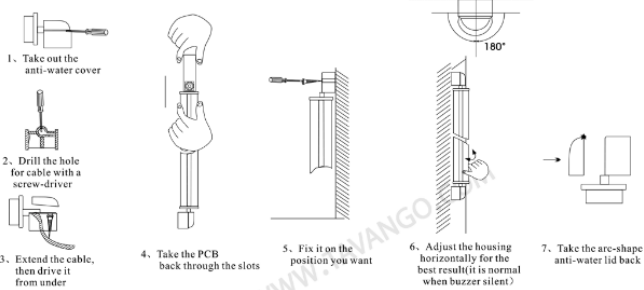


Take out the upper plastic block  
Take out the under plastic block  
Push out the PCB from the under by a screw-driver

### 3. DIP setting

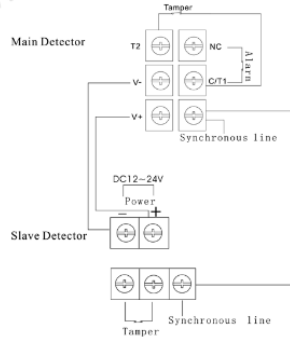


### 4. Fix the fence bracket



- 2 -

### 2. wiring



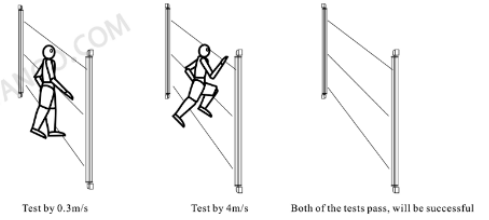
Note: The main detector and slave detector should share the same power

Wire size - distance	DC12V	DC24V
0.5mm <sup>2</sup> (φ0.8)	300m	600m
0.75mm <sup>2</sup> (φ0.18)	400m	800m
1.25mm <sup>2</sup> (φ1.2)	700m	1400m
2.0mm <sup>2</sup> (φ1.6)	1000m	2000m

Wiring distance between power and main detector

## 6. Walking test

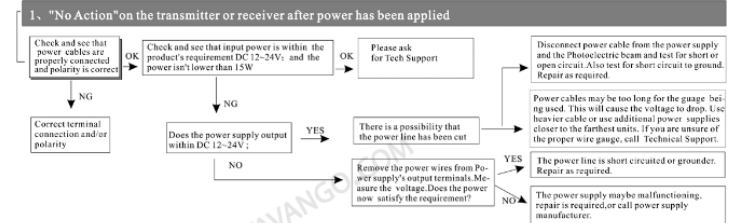
1. Block any of beams it will prealarm (The buzzer sound discontinuously)
2. Block two neighbour beams it will alarm (The buzzer sound continuously)
3. Installation successful when above two test passed



## 7. Technical parameters

Model	GB-104	GB-106	GB-108	GB-1010	GB-1012	GB-204	GB-206	GB-208	GB-2010	GB-2012	GB-404	GB-406	GB-408	GB-4010	GB-4012	GB-604	GB-606	GB-608	GB-6010	GB-6012	
	Alert distance	Outdoor 10m					20m					40m					60m				
	Indoor 20m					40m					80m					120m					
No. of the beams	4	6	8	10	12	4	6	8	10	12	4	6	8	10	12	4	6	8	10	12	
Detecting mode	Neighbor 2 beams blocked simultaneous																				
Optical source	Infrared digital pulse beam																				
Response time	50msec																				
Alarm output	Relay contact output:NO_NC contact rating:AC/DC30V 0.5Amax																				
Power supply	DC 12-24V P≤ 15W																				
Power consumption	<170mA (DC 12V, 12beam, 60m)																				
Temperature&humidity	-25°C~55°C 5%-95%RH (relative humidity)																				
Dimension	Refer to the diagram																				
Tamper output	Contact output:NC contact rating:DC24V 0.5Amax.																				
Optical axis adjustment	180°																				
Material	Al alloy metal housing																				

## 8. Trouble solution



- 3 -



توان گستر الکترونیک  
TAVAN GOSTAR ELECTRONIC